

# We Are Family (Chorus)

C melody

via Sousaphones Against Hate



C Accompaniment

# We Are Family (Chorus)

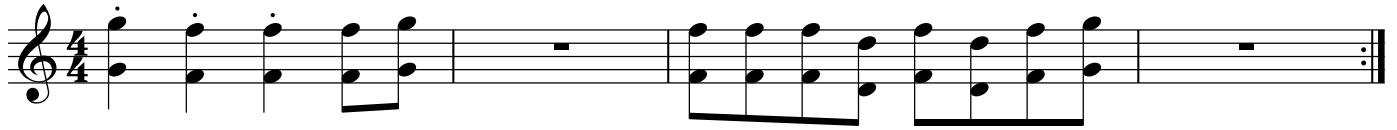
via Sousaphones Against Hate



# We Are Family (Chorus)

B♭ Melody

via Sousaphones Against Hate



# We Are Family (Chorus)

B $\flat$  Accompaniment

via Sousaphones Against Hate



# We Are Family (Chorus)

Melody Eb

via Sousaphones Against Hate



Trombone Melody

# We Are Family (Chorus)

via Sousaphones Against Hate



# We Are Family (Chorus)

Tuba

via Sousaphones Against Hate

F<sup>7</sup> Eb+F B $\flat$  Db/E $\flat$  F<sup>7</sup>

The image shows a musical score for the Tuba part of the chorus of 'We Are Family'. The music is written on a single staff in bass clef, 4/4 time, with a key signature of two flats (B-flat and E-flat). The melody consists of a sequence of eighth and quarter notes. Above the staff, five chord symbols are indicated: F<sup>7</sup>, Eb+F, B $\flat$ , Db/E $\flat$ , and F<sup>7</sup>. The piece concludes with a double bar line and repeat dots.